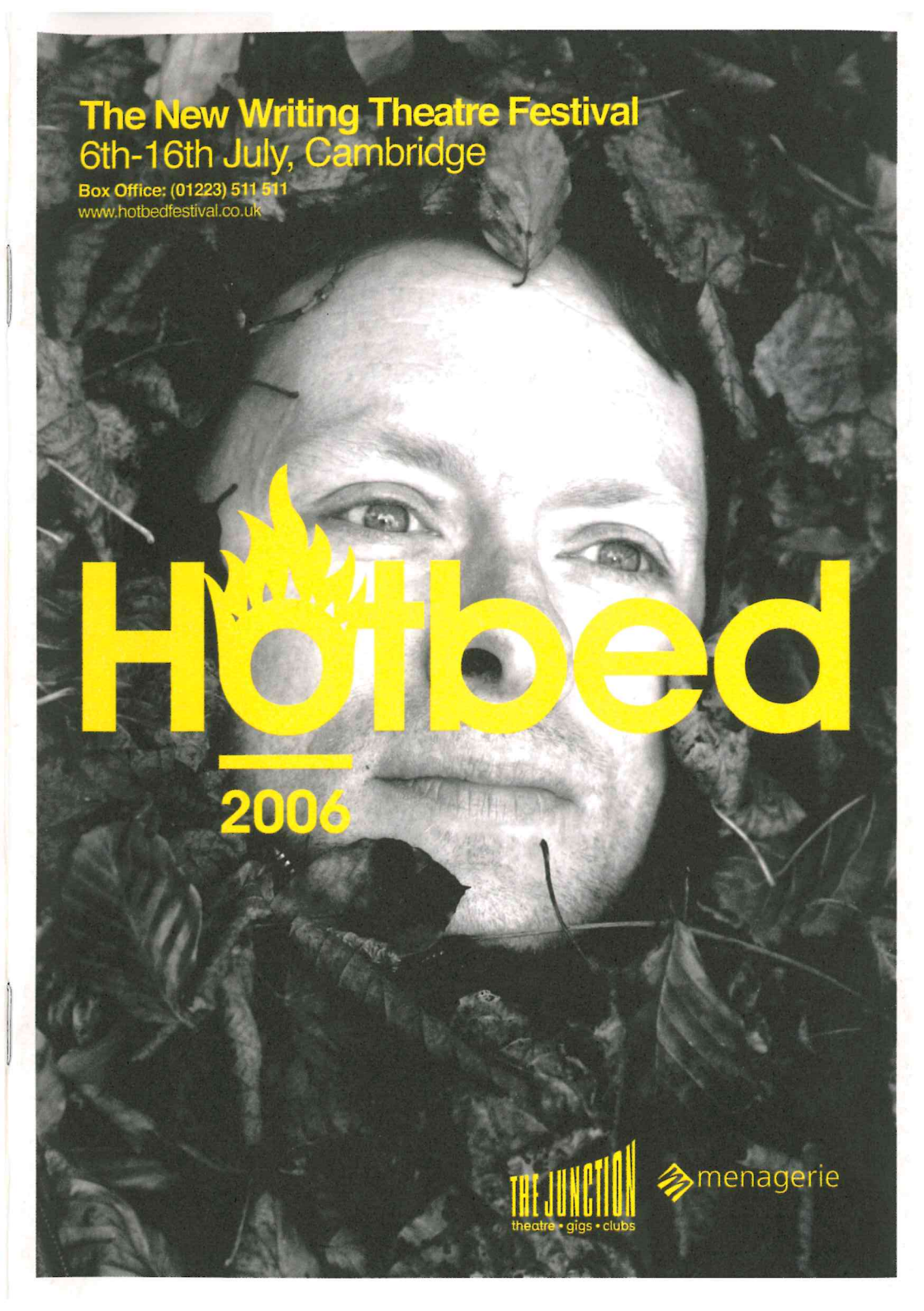


The New Writing Theatre Festival
6th-16th July, Cambridge

Box Office: (01223) 511 511
www.hotbedfestival.co.uk



Hotbed

2006

THE JUNCTION
theatre • gigs • clubs

 menagerie



Hotbed 2006

Box office (01223) 511 511

This is a theatre festival

Hotbed is a vibrant and innovative theatre festival with one simple aim: to celebrate the energy and excitement that comes from commissioning, producing and witnessing new plays. Between 6th and 16th July, Cambridge will become a hive of activity as some of the UK's best actors, directors and writers descend on The Junction to create and present more than twenty new pieces of theatre.

Join us for ten days of fantastic new performances, buckets full of festival fun and the chance to boast 'I saw it first' (as well as providing a cultural antidote to some inevitable World Cup fever!). In addition to commissioned monologues, duologues and triologues (a word we are striving to see entered into the English Dictionary), Hotbed offers one-on-one performances (that's one actor and one audience member), acclaimed guest productions, workshops, readings and plenty of opportunities to network (that's chatting over a couple of glasses of wine for those of you unfamiliar with theatrical jargon).

At the time of writing, many of these productions are still being developed. It might sound risky, but with writers coming to Hotbed fresh from success at prestigious venues such as the National Theatre, Royal Shakespeare Company, Soho Theatre, Donmar Warehouse and many more, we know that we're in for a top-quality theatrical feast.

This is the third Hotbed festival presented by the combined creative forces of Menagerie Theatre and The Junction and audiences at previous festivals have relished the opportunity to experience new work before it has gone onto achieve success on stages across the world.

So go on, take a chance – but not a risk – and join us for Hotbed 2006.

Paul Bourne
Artistic Director

Paul Bogen
Executive Producer

Cover photo: Debby Besford

THE JUNCTION
theatre • gigs • clubs

 menagerie

How the festival works

It's really quite simple. Honest.

Firstly, most of the events take place at The Junction in our lovely new theatre.

Hotbed has commissioned 9 short plays from some of the country's leading writers for the stage. You'll find details of these plays on pages 4 to 9. They are split up into Monologues, Duologues and Triologues (which we know isn't a real word, but we couldn't think of anything else) and you can see them in various combinations throughout the festival (which is when you'll need to refer to the diary at the back). Additionally, we are also offering a series of one-on-one performances, guest productions, workshops, staged readings and networking events that can also be found within these pages.

That's it. Just lots and lots of really great theatre. Told you it was simple.

Contents

Monologues	04
Duologues	06
Triologues	08
One-On-Ones	10
Guest Productions	12
Staged Readings	14
Guide to Writing	16
Workshops	18
Hotbed 2004 Review	19
Supporters	20
About us	21
Diary	22
How to Find Us	25
Booking	26





Monologues

monologue

(mon-o-log) • noun 1. a play or part of a play with a speaking role for one actor
2. a new short play commissioned for Hotbed 2006

1 The Same Language Carl Miller (from the words of Ben Duncan)



A story of illegal love told by two men in one body spanning fifty years, two continents and one unspeakable vice.

A subversive alien plots to elude deportation so he can remain in this country and pursue his criminal activity: love. From the witch-hunts of an era when being the only gay in the village could have you thrown in jail to present day Cambridge, *The Same Language* is a tale of persecution, fear and a love that defied the law.

Carl Miller has worked at the National Theatre, Unicorn Theatre and Theatre Royal Bury St. Edmunds, scripted an award-winning short-film called *Jean*, and written a libretto to Ravel's *L'Enfants et Les Sortilèges* which previews soon in Washington DC.

“An extraordinary and exhilarating show”

The Guardian (on *Journey to the River Sea*)

2 In This House Tajinder Singh Hayer



A deeply moving tale of a woman caught in the no-man's-land between life and death.

Following a catastrophic earthquake, a woman lies trapped under the ruins of her house. She passes the time with games and fantasies and tries to remember the ones she has loved. She thinks too about the outside world, wondering how it might have changed and whether she will ever see it again.

Tajinder Singh Hayer has written extensively for the stage, radio and television with work produced by institutions including West Yorkshire Playhouse and the BBC. He also tutors on Creative Writing and Identity at the University of Bradford.

When can I see these? see diary pages 22 - 24

3

The Black Light Nick Harrop



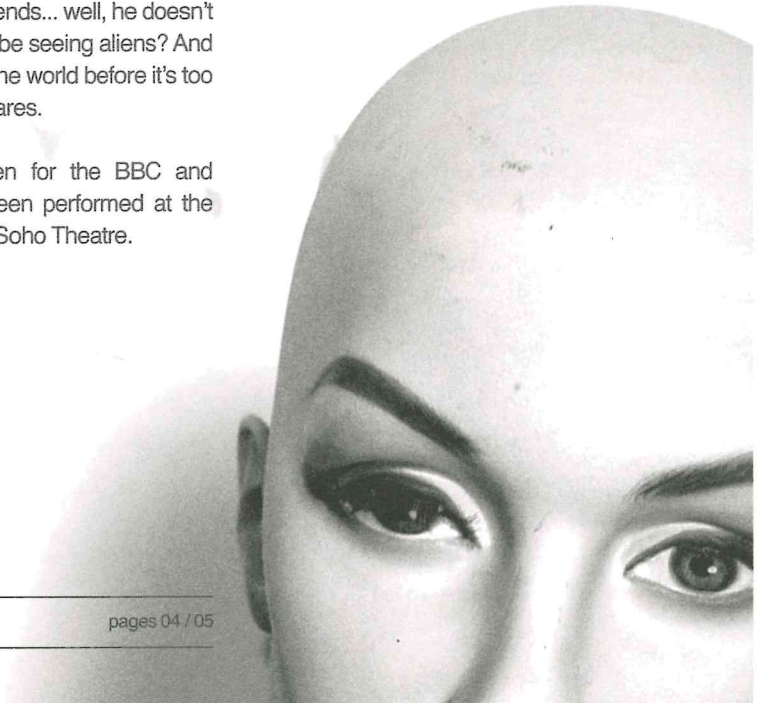
A dark comedy with a surprising twist about loneliness, growing up and an impending alien invasion...

Something happens to Simon when he's asleep – he can't remember precisely what it is, but it definitely involves a mysterious black light and some very strange shapes and noises. But his dad doesn't care, his doctor won't take him seriously, and his friends... well, he doesn't have any. Can he really be seeing aliens? And can he warn the rest of the world before it's too late? Don't have nightmares.

Nick Harrop has written for the BBC and his theatre work has been performed at the Edinburgh Festival and Soho Theatre.

“Exciting and extraordinary... it was stunning”

edinburghguide.com (on Ever After)





When can I see
these? see diary
pages 22 - 24

Duologues

4 Night, Night Andrew Muir



Two strangers meet at the top of a mountain and for a short time they get try to get to know each other. And then one of them dies.

Simon is new to his job, but with everybody else away, it's up to him to deal with the customer who has just walked in. But there's a problem – she's beautiful, and Simon suddenly finds that he's sweating, shaking and behaving like a child. Today he should be playing God and God never f**ks up. Does he?

Andrew Muir's previous work for the stage includes Gaugleprixtown (premiered at Hotbed 2004 before being developed into a full-length play for Menagerie), The Love of A Good Woman for Battersea Arts Centre and Strigoli, a new work under development in Belfast.

“A writer to watch”

The Independent

5 Dark Tayle Laurence Wilson



A dark comedy about parents, old age, people losing their way and then finding themselves again (just like in every good fairytale).

Harry and Gerri are an elderly married couple who have barely spoken in 25 years. Considered a burden by their children, they are left deep within a forest so that nature can take its course. Will this new predicament force the couple to finally confront their past and escape the fate their children have planned for them?

Laurence Wilson's previous work has been produced at Manchester's Contact Theatre and Everyman Theatre in Liverpool. His next play is scheduled for broadcast on BBC Radio 3 early next year.

“A brave new voice in
British Theatre”

Manchester Evening News

Duologue

(duo-o-log) • noun 1. a play or part of a play with speaking roles for two actors 2. a new short play commissioned for Hotbed 2006

6

Doogie's Last Dance Debbie Giggle



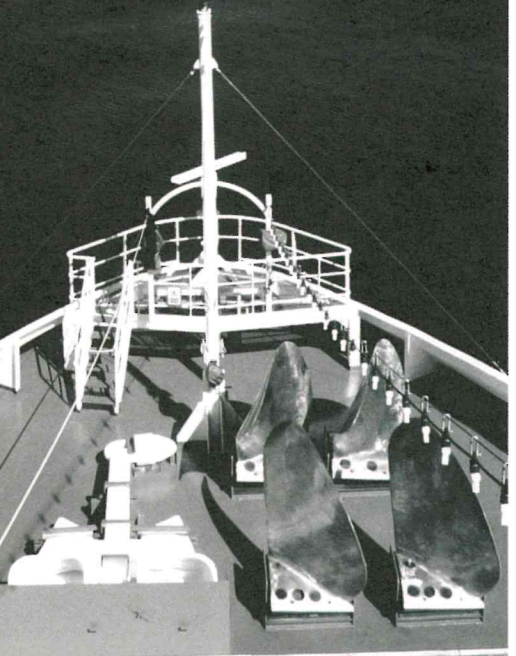
Doogie and Maurice are perfect gentlemen, but are they really perfect for each other?

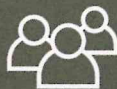
Working on a Mediterranean cruise ship, Doogie waltzes headlong into one last grand passion when he meets fellow dancer Maurice. They could be perfect partners, but grumpy old man Maurice is on the look out for a rich widow and is refusing to fall in step with Doogie's courtship dance. But his new friend won't give up without a fight and thinks it's about time for Maurice to face up to some uncomfortable home-truths. There could be murder on the dancefloor...

Debbie Giggle's previous credits include work at the Windsor Fringe Festival and several scripts for the BBC 1 drama Doctors.

“A moving yet
unsentimental piece...
witty and brave”

Fay Weldon (on *A Bed To Die For*)





When can I see these? see diary pages 22 - 24

Triologues

7

Between This Breath and You Naomi Wallace



The janitor at the clinic has a mop with divine powers. There's a father hanging around who can walk through walls. And a New York nurse is about to reveal a taste for the unusual. In the divided city of modern day Jerusalem, a bizarre confrontation will lead these three strangers to expose a dark and disturbing secret.

Naomi Wallace's work has been produced in both the UK and the United States and

has gained her the Susan Smith Blackburn Prize, the Kesselring Prize, the Fellowship of Southern Writers Drama Award and an Obie as well as the MacArthur 'Genius' Fellowship. Naomi's award-winning film *Lawn Dogs* is currently available on DVD and her most recent commissions have come from the Royal National Theatre and the Actor's Theatre of Louisville.

8

06/07/05 Steve Waters



It's a hot night in a large London house set behind imposing iron gates. But hardly anybody is about and frankly it's all getting a bit spooky. Sara and Cass sit at home watching a DVD and eating sticky toffee pudding. But Sara doesn't like Cass much, London is getting scarier by the day and the kids just won't go to sleep. And just why is it taking Rich so long to get home from work? A topical and comic tale of fear and loathing amongst the new rich.

Steve Waters has written extensively for the stage with work produced at Sheffield Crucible, Donmar Warehouse and Hampstead Theatre. His new play, *Clare's Walk*, can also be seen at this year's Hotbed Festival (see page 13).

“Urgent and essential viewing”

The Times (on World Music)

Triologue (tri-o-log) • noun 1. a word invented for Hotbed 2006 for a play or part of a play with speaking roles for three actors 2. a new short play commissioned for Hotbed 2006

9

Doghead Boy & Sharkmouth go to Ikea Dawn King



Life isn't easy for young animals and these two savages are starving.

They constantly search for things to fill them up and the cars they had for dinner are becoming a distant memory.

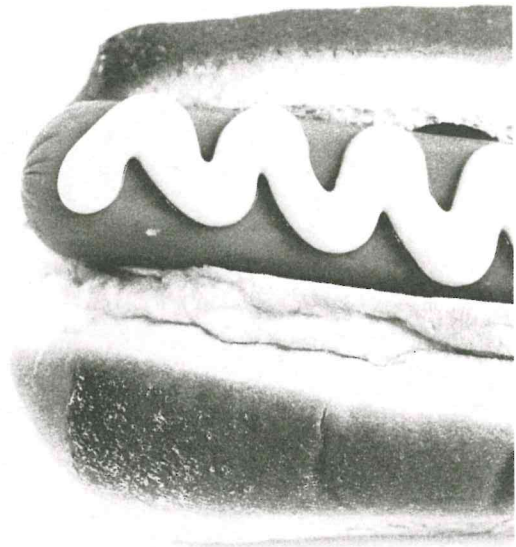
It's time for Doghead Boy and Sharkmouth to head for Ikea, where the grown ups go to eat furniture – they'll need to bring home a snack in case the midnight munchies kick in...

An intriguing and quirky take on surviving the modern urban jungle.

Dawn King's work has been performed at Battersea Arts Centre, Reading Royal Court Theatre, Hackney Empire and the Edinburgh Festival. Recent projects include *It Started In Africa* (performed in a pod on the London Eye) and *present:tense* at the Old Red Lion. She is currently under commission to the UK Film Council to write a screenplay titled *The Squatters' Handbook*.

“Wonderfully engaging
... consistently clever”

The Times (on *Faster*)





Hotbed 2006

Box office (01223) 511 511

One-On-Ones: Brief Encounters

Theatre in a car boot, in a lift and on the toilet...

Hotbed 2006 really makes full use of The Junction's new theatre facilities with Brief Encounters: a series of one-on-one performances (that's one actor and one audience member) that take place in some unusual and unexpected places.

Discover how one man metamorphosised into a fish, the true meaning of the number seven and exactly why there's an old man locked in a car boot out the back.

Journey between nine different 5-minute performances for a theatrical trip like no other featuring new work by Fraser Grace, Gabriel Gbadamosi and Anna Reynolds amongst others.

Thur 6th - **Sat** 8th July 10pm

Mon 10th - **Thur** 13th July 10pm

Sat 15th July 10pm

Age: 16+

Price: £8 / £5





Hotbed 2006

Box office (01223) 511 511

Guest productions

House Jumped Up Theatre

Pop around to our House, an everyday Cambridge residence featuring an extraordinary theatrical performance. You are standing in a stranger's home when a young man breaks in through the dining room window. What does he want and how will you react? Jumped Up Theatre offers you the chance to experience three new pieces of work in a very unusual setting. Moving around an ordinary city house, you will encounter a trio of very different characters with their own unique stories to tell.

This is imaginative and enthralling theatre that offers all its House guests a cup of tea on arrival. Just remember to wipe your feet on the way in.

House features new plays written by Peggy Riley, Nick Wood and Fraser Grace. You will be advised of the address for the performance by our box office staff when booking.

Mon 10th July 6pm

Tue 11th July 6pm

Price: £8 / £5

An Oak Tree Tim Crouch

An Oak Tree is theatre without a safety net – are you brave enough to take a leap into the unknown? Gripping, absurdly comic and richly theatrical, this is live performance at its most dangerous and unpredictable.

Tim Crouch is an acclaimed innovator of modern theatre and his new play offers a perilous twist – the other actor on stage with him will be flying blind, having never seen or read anything about the show! The story will be as new to Crouch's counterpart as it is to the audience.

Following up his acclaimed production *My Arm* (which appeared at Hotbed 2004), Crouch presents the story of a failing stage hypnotist, a grieving father and the tragic circumstances that have thrown them together.

“ Absolutely f*ing fantastic! ”**

The Observer

Fri 14th July 10pm

Price: £9 / £6

Clare's Walk Steve Waters & Menagerie Theatre

Come with us on a trip from London to the Fens in search of John Clare – poet, visionary and lunatic. Follow the same journey the celebrated poet made in 1841 when he walked for three days to his home near Peterborough from the Epping Forest asylum where he had been incarcerated. Along the way, a succession of characters help to reveal the hidden landscapes of the A1 corridor and expose the environmental issues that should concern us all.

Deepened and illuminated by Clare's own verse and prose, Steve Waters' new, one-man play offers a thoughtful, topical and engrossing voyage through our own corner of this green and pleasant land.

Fri 14th July 6pm

Age: 14+

Price: £8 / £5

Duration: 1hr 20





Hotbed 2006

Box office (01223) 511 511

Staged Readings

Menagerie Theatre's writer development programme helps to support and develop the best new work being created for the stage in the East of England. In addition to the many regional writers the company is producing during the festival, Menagerie is taking the opportunity to showcase work-in-development

by its current Attached Writers, Carl Miller and Carmel Winters. Staged Readings act as an informal gathering place for audiences and theatre practitioners to meet, inspire and exchange ideas.

Swaffam Peddler Carl Miller

A tale of unspeakable desires and high hopes; of misdirected love and violent ambition; of three lost souls, their dreams and what it takes to kill them. It's twilight in East Anglia and Serena's got high hopes for the local literary festival – this could be her big chance. But

her teenage son isn't being much help and by the time the night is over everything will have changed.

Sat 8th July 6pm

Price: £2

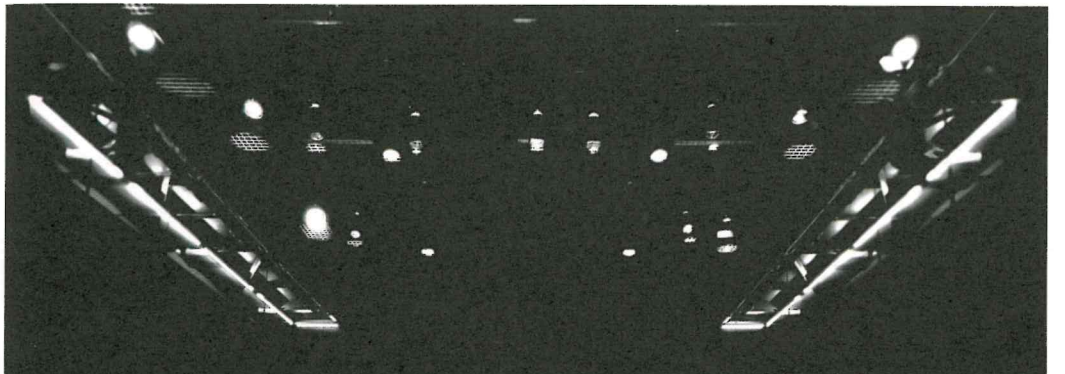
Killing Kind Carmel Winters

Belfast, 1981 and the IRA Hunger Strike is in full swing. Two prisoners' wives emerge from enthrallment to their martyred men to become agents of terror and love. In a story with strong contemporary overtones, Killing Kind is a powerful new play exploring the human

drama behind terrorism's monstrous face and asks whether life can triumph over death in a struggle that demands total sacrifice.

Wed 12th July 6pm

Price: £2



Hotbed welcomes Real Circumstance and Nabokov with their own new work in development supported through Arts Council England East's Escalator initiative.

Real Circumstance Just Green Fields Jonathan Lichtenstein

'I've never understood why people are so obsessed with Israel. It's always in the news. All the time. I'm Welsh and there's ten times more news about Israel than there is about Wales'. What happens when grief for a lost generation forms the identity of a whole culture?

When that grief is politicised, everybody is forced to bear its weight.

Thur 13th July 6pm

www.realcircumstance.com

Price: £2

Nabokov Artefacts Mike Bartlett

Sixteen-year-old Kelly is a typical South London teenager, English through and through. That is until her unknown father turns up out of the blue, and he turns out to be Iraqi. He wants her to accept the gift of a priceless antique from the Baghdad Museum. She wants him to stay and get to know her. Kelly embarks on an epic

journey of discovery in this tender and provocative play about family, identity and the clash of cultures, which this year won the inaugural Old Vic New Voices Award.

Sat 15th July 6pm

www.nabokov-online.com

Price: £2





Hotbed 2006

Box office (01223) 511 511

The Hotbed guide to writing

Saturday
15th July

10am-12noon

Writers' Roundtable

Hotbed aims to offer writers a full-service package. As well as producing and showcasing work by more than 20 playwrights, we also provide some fantastic workshops (see page 18), networking events, discussion forums and skills-sharing sessions. In partnership with national agencies writernet and literature training, Hotbed 2006 offers a development day for writers looking to further their career.

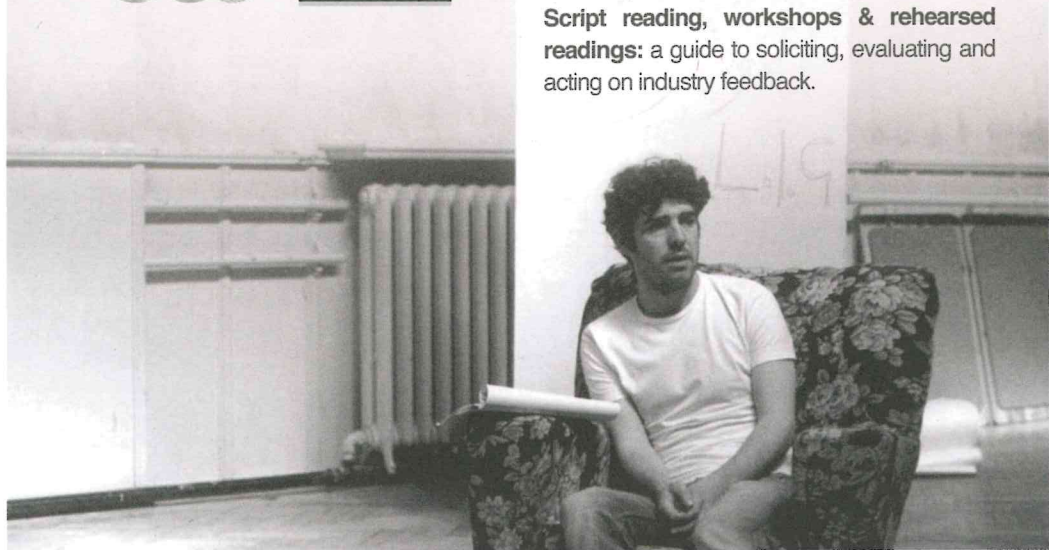
Playwrights need to understand where they are in relationship to a changing professional landscape. Director of Writernet, Jonathan Meth, will take writers through the following:

What it is to be a playwright now: exploring the relationship between the aesthetic, social, cultural, political and financial.

Making a living: how to work across the dramatic media.

Locating yourself within the landscape: how to operate as a dramatic writer.

Script reading, workshops & rehearsed readings: a guide to soliciting, evaluating and acting on industry feedback.





12.15pm-1.45pm

The State of the New Writing Nation

Chaired by Hotbed's Artistic Director, Paul Bourne, a panel of distinguished guests will give their perspective on new writing across the UK. This is a unique opportunity to quiz theatre professionals on all aspects of new writing for the stage. This discussion is open to the public.

All Day

Writers' Surgeries

These are one-on-one half-hour surgeries for writers to discuss a specific writing project they are developing. Surgeries can cover everything from developing a proposal through to finding partners / collaborators, fundraising and marketing.

6.30pm

Nabokov Artefacts

You are invited to stay for a staged reading of a new play by Mike Bartlett. Further details of this performance can be found on page 16. There is no charge for Writers' Development attendees.

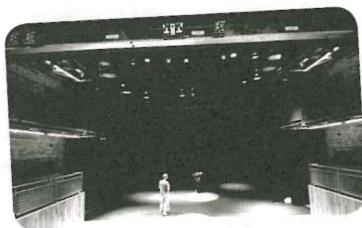
Sat 15th July
(by advance booking only)

Price: Free

To apply for a place on the Hotbed writers' development day, please send a copy of your writing CV with a short covering letter by email to info@hotbedfestival.co.uk or post to :

Hotbed 2006,
The Junction,
Clifton Way,
Cambridge
CB1 7GX.





Workshops

Nuts and Bolts Nina Steiger (Soho Writers' Centre)

Nuts and Bolts is Soho Theatre's sell-out series of back-to-basics intensive seminars incorporating theory, discussion and practical exercises. These sessions are designed to give writers on every level a sample of fresh approaches to the building blocks of writing (or re-writing) a new play. They also provide an introduction to the range of programmes, events and offerings available all year round at Soho Theatre, including the biennial Verity Bargate Award for playwrights due to be launched in 2006/7.

Soho Theatre identifies and nurtures emerging writers, produces a bold range of plays and comedy, and attracts and develops new audiences. To learn more about its programme, visit

www.sohotheatre.com.

Thur 13th July
2pm - 4pm

Price: £10 / £7.50

Happy Families Max Stafford-Clark

Early career playwrights often use the idea of family as an inspiration for their work. Max Stafford-Clark's practical workshop will explore this ever-fruitful territory as an inspiration for new plays by exploring three examples of this theme: Sliding with Suzanne by Judy Upton, The Arbour by Andrea Dunbar, and Duck by Stella Feehily.

Max Stafford-Clark founded the Joint Stock Theatre group in 1974 and the touring company Out of Joint in 1993. He has been Artistic Director

at The Traverse, Edinburgh and The Royal Court Theatre and has directed for Sydney Theatre, Abbey Theatre Dublin and Joseph Papp's in New York. He has also commissioned and directed many first productions by the country's leading writers including Shopping and F***ing by Mark Ravenhill, Blue Heart by Caryl Churchill and Our Country's Good by Timberlake Wertenbaker.

Sat 15th July
2pm-5pm

Price: £15 / £10

Hotbed 2004

Review

Apart from presenting a lot of great theatre, one of the main aims of the Hotbed festival is to act as a springboard for all the talented writers, actors and directors involved. This is what has been happening to just some of the people involved in Hotbed 2004 over the last two years.

Gifts of War by **Fraser Grace** has been toured extensively throughout the UK by Menagerie Theatre. Fraser has also achieved great success with *Breakfast With Mugabe*, produced by the Royal Shakespeare Company (and directed by Sir Antony Sher), which is currently playing at Soho Theatre in London before transferring to the West End for an extended run. **Andrew Muir's** short play, *Gaugleprixtown*, which was first seen at Hotbed 2004, went on to become a full-length play, which Menagerie produced for last year's Edinburgh Festival. The show also featured original Hotbed cast members **Darren Strange** and **Simon Quarterman**.

Since 2004, Andrew has also won a coveted commission from The Puppet Centre Trust to work with puppeteer Maximum Humphries on the creation of a new play which was showcased at Soho Theatre earlier this year.

Having played the lead role of Lyra Belacqua in the National Theatre's adaptation of Philip Pullman's *His Dark Materials*, **Anna Maxwell Martin** was already a theatrical star when she joined the 2004 Hotbed rep company. Since then, Anna has won a BAFTA for her role as Esther Summerson in the recent BBC series *Bleak House*, as well as taking numerous other television, radio and film roles including *Enduring Love* with new James Bond Daniel Craig.

Yet perhaps the biggest development since the last Hotbed festival has been the opening of **The Junction's** brand new theatre. Part of a £7.5 million lottery-funded re-development of The Junction's facilities, the theatre (affectionately known as The Shed due to its wood-panelled exterior) has given Hotbed a fantastic new base for all its innovative work.





Hotbed 2006

Box office (01223) 511 511

Supporters

The festival management would like to thank the following for their support of Hotbed 2006:

**BBC East, Arts Council
England, Escalator,
Cambridge City Council,
Foyle Foundation and
The District.**

Contacts

**Menagerie Theatre
Company**
The Junction
Clifton Way
Cambridge
CB1 7GX
(01223) 249 300

office@menagerie.uk.com
www.menagerie.uk.com

The Junction
Clifton Way
Cambridge
CB1 7GX
(01223) 578 000

info@junction.co.uk
www.junction.co.uk

Head Honcho
Paul Bourne

Big Cheese
Paul Bogen

Wing Commander
Patrick Morris

Fiscal Impropriety
Alex Drury

Mission Control
Cat Moore

Managing at Short Notice
Anna Bewick

Ticket Flogger
Nick Thompson

Lights n' That
Sherry Coen

Noises n' Stuff
Scott Myers

Pretty Things
thedistrict.co.uk

BBC East



ESCALATOR



We are The District.

About us



Menagerie Theatre began life in 1999 when a small group of professional artists developed a series of small-scale staged readings in the cellar of Cambridge's CB2 café. Over the last 7 years, the company has evolved into the East of England's most prolific producer of new writing for the stage; discovering, developing and producing high-quality original plays. By attracting funding from Arts Council England, charitable trusts and sponsorship (as well as generating income through a thriving corporate training arm), Menagerie now produces plays that tour nationally and presents the biannual Hotbed festival with The Junction.

www.menagerie.uk.com

The Junction is one of the eastern region's premier multi-arts centres and has been presenting the very best in theatre, dance, clubs, music, comedy, children's and participation events since opening in 1990. A registered charity, the venue underwent major re-development in 2004/5 through £7.5 million of lottery funding secured through Arts Council England. As well as upgrading existing facilities, the development also included the opening of a brand new 220-capacity theatre and a dedicated education and rehearsal space. As a result, the organisation now has the facilities to develop new performances. Recent companies to benefit from the use of the venue's facilities for the production of work include Gob Squad, Blind Summit and Uninvited Guests. Alongside Colchester Arts Centre, The Junction also co-ordinates the performing arts strand of Arts Council England East's Escalator initiative, aimed at finding, supporting and nurturing the best artistic talent from across the region.

www.junction.co.uk



Date	Time	Event	Page	Price/Con
Thu 6th July	6:45pm	Launch Event		Invite
	8:00pm	① The Same Language ④ Night, Night ⑦ Between This Breath and You	04 - 09	£8 / £5
	10:00pm	One-On-Ones Brief Encounters	10	£8 / £5
Fri 7th July	8:00pm	① The Same Language ④ Night, Night ⑦ Between This Breath and You	04 - 09	£8 / £5
	10:00pm	One-On-Ones Brief Encounters	10	£8 / £5
Sat 8th July	6:00pm	Staged Reading Swaffham Peddler	14	£8 / £5
	8:00pm	② In This House ⑤ Dark Tayle ⑧ 06/07/05	04 - 09	£8 / £5
	10:00pm	One-On-Ones Brief Encounters	10	£8 / £5
Mon 10th July	6:00pm	Guest Production* House	12	£8 / £5
	8:00pm	② In This House ⑤ Dark Tayle ⑧ 06/07/05	04 - 09	£8 / £5
	10:00pm	One-On-Ones Brief Encounters	10	£8 / £5
Tue 11th July	12:45pm	⑧ Lunchtime Performance* 06/07/05	8	£2
	6:00pm	Guest Production* House	12	£8 / £5
	8:00pm	③ The Black Light ⑥ Doogie's Last Dance ⑨ Doghead Boy	04 - 09	£8 / £5
	10:00pm	One-On-Ones Brief Encounters	10	£8 / £5

Date	Time	Event	Page	Price/Con
Sat 15th July	10:00am	Writer's Development Writers' Round Table	16	
	12.15pm	Writer's Development Panel Discussion	17	
	2:00pm	Workshop Happy Families	18	£15 / £10
	6:00pm	Staged Reading Artefacts	15	£2
	8:00pm	The Triologues 7 Between This Breath and You 8 06/07/05 9 Doghead Boy	08	£8 / £5
	10:00pm	One-On-Ones Brief Encounters	10	£8 / £5
Sun 16th July	4:00pm	The Best of the Fest Oval House Theatre, London		
	7:45pm	The Best of the Fest Oval House Theatre, London		

Box Office
telephone



**All events take place
at The Junction
except:**

- * venue tbc when booking tickets
- + **Corpus Playroom**,
St Edward's Passage,
Cambridge





Hotbed 2006

Box office (01223) 511 511

Box Office telephone



The Junction,
Cambridge Leisure Park,
Clifton Way,
Cambridge CB1 7GX

T (01223) 511 511
F (01223) 403 340
E tickets@junction.co.uk (enquiries only)
W www.hotbedfestival.co.uk

Concessions

We are pleased to be able to offer concessionary prices to the majority of Hotbed events. Concessions are available to senior citizens, full-time students, children under 16 and those in receipt of one or more of the following: income support; job seekers allowance (income based only), housing benefit or those who hold a current NHS prescription exemption card.

Please bring the relevant proof of status with you when you collect your tickets at the box office. If proof cannot be supplied, The Junction reserves the right to charge at the full ticket price.

Access

The Junction has level access throughout the ground floor with wheelchair accessible lifts to first floor levels and wheelchair accessible toilets. Dedicated disabled parking spaces operated by NCP Car Parks can be found in front of the building and in the ground floor of the multi-storey car park, which are both accessible via Clifton Way.

All three auditoria are fitted with infrared hearing assistance systems. Working dogs are welcome. Should you wish, a member of staff will be happy to dog-sit for you for the duration of the performance, but please call in advance if this is required.

If you would like to discuss any access issue prior to your visit, please call the box office on (01223) 511 511. The text in this brochure is available in LARGE PRINT upon request.

Map

How to find us

